

TempControl

The most integrated and sophisticated remote temperature monitoring solution

The mobile temperature device is lightweight and ergonomic and can be easily retro-fitted to existing fridges. The temperature probe and extension cable are fed across the door sealing or through the fridge channel into the measuring chamber.

Key features:

- Mobile application and TempControl dashboard show constantly the current and the lowest and highest temperature since the last reset and in real-time.
- Easy configure of two set points for high and low temperature.
- Calibrate against a reference device in the m the device wi.
- Intuitive colour coding is used to give the user a quick and easy view of the temperature status of the fridge.
- Flashing and audible alerts.
- Pre-defined or free text reason codes and acknowledgment of alerts.
- Graphical, summary or detailed view and reports on TempControl dashboard.

Mobile Device

- 5" colour touch screen
- Android 4.4
- 2600 mAh backup battery

Space saving

- no network cable needed
- small footprint
- easily mountable and lightweight
- solid probe extension cable

Connectivity

- Wireless 4G or 3G
- WiFi

Integration

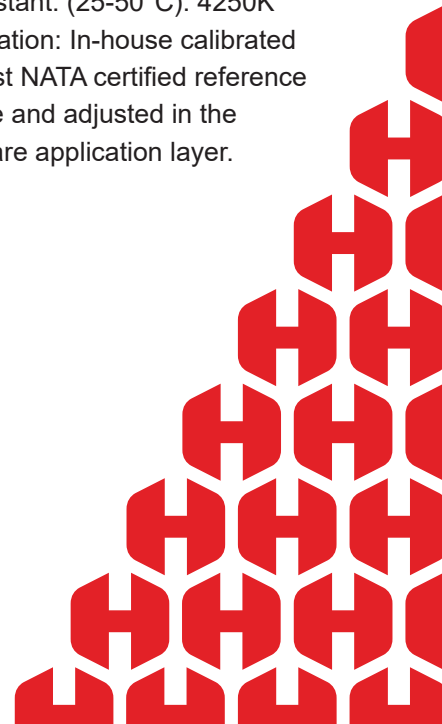
- Directly integrates with HealthRFID BloodControl
- Directly integrates with HealthRFID SpecimenControl
- Can be used standalone

TempControl Dashboard Info

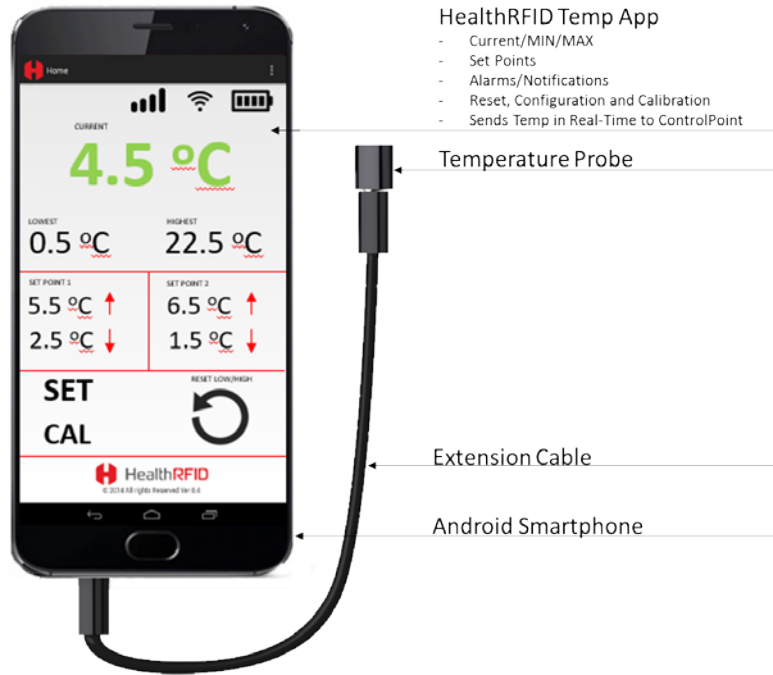
- Timestamp
- Temperature Location
- Alert
- Alert Criteria
- Acknowledge Alert
- Date/Time Acknowledge
- User Acknowledge
- Acknowledge Comment
- Date/Time Comment
- Reset Alert
- Date/Time Reset
- User Reset
- Reset Comment
- Date/Time Comment

Temperature Probe

- Weight: 7 grams
- Length: 36.50mm
- Diameter: 8.90mm Material & Finish: Machined aluminium body and automotive grade paint. Sensor: Precision: $\pm 0.2^{\circ}\text{C}$ (a decimal point accuracy).
- Continuous temperature readings and recording according to NATA requirement.
- Operating temperature: -40°C to 125°C
- Rated temperature: -20°C to 50°C
- Resistance & β -constant tolerance: $\pm 1\%$
- β -constant: (25-50°C): 4250K
- Calibration: In-house calibrated against NATA certified reference device and adjusted in the software application layer.



the next generation of tracking



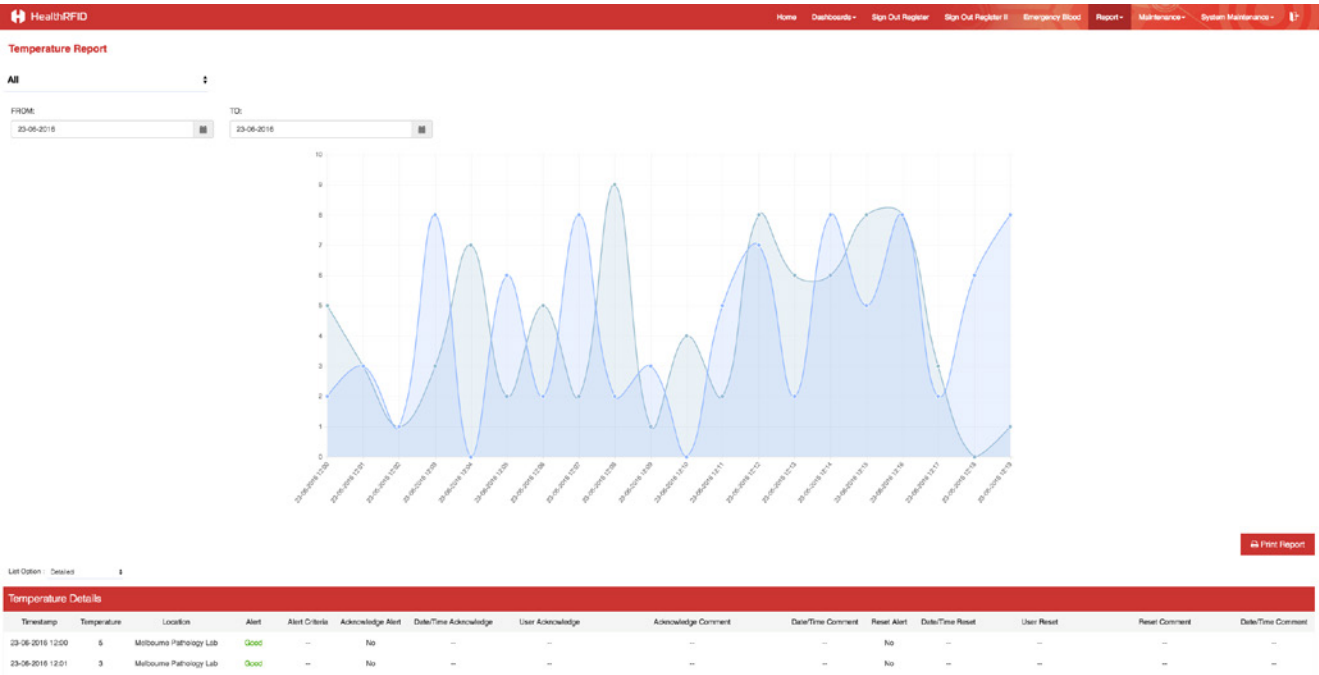
HealthRFID Temp App

- Current/MIN/MAX
- Set Points
- Alarms/Notifications
- Reset, Configuration and Calibration
- Sends Temp in Real-Time to ControlPoint

Temperature Probe

Extension Cable

Android Smartphone



PO Box 318, Belmont
 3216 Victoria, Australia
 Australia: 1300 867 343
 From outside Australia: +613 5227 7451

www.healthrfid.com

